



Cleve and his neighbor hanging the panels in his custom storage box.

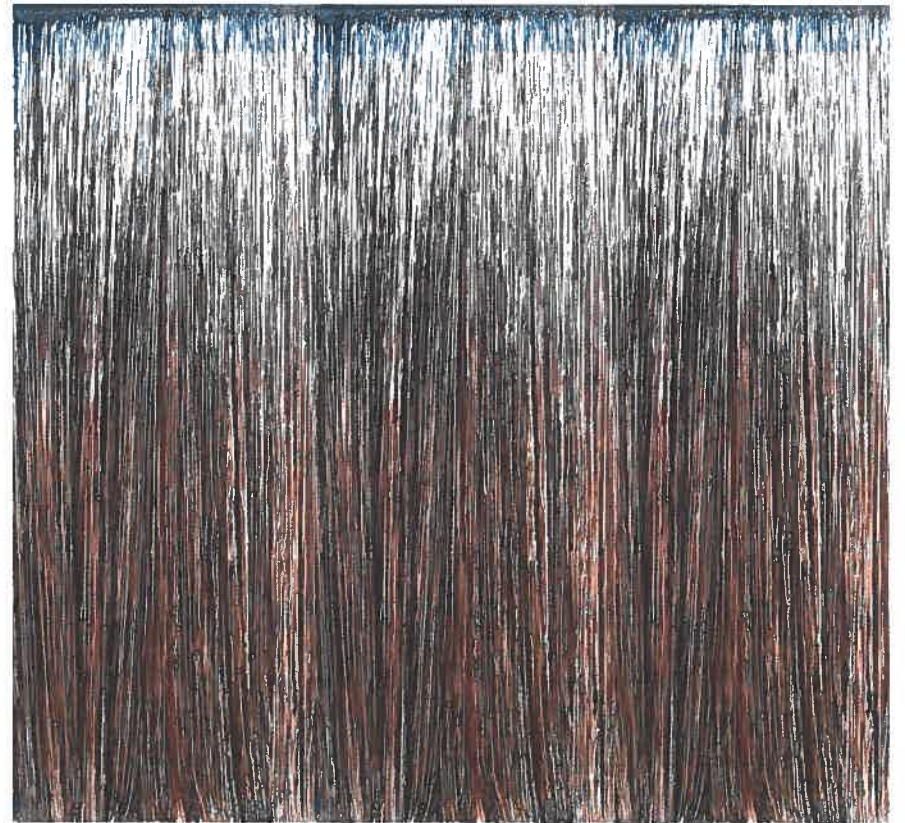


Cleve weaving one of the panels on his handmade loom.

For information about displaying this work or to reach the artist, contact:

JudeAndreasen
202 486 7475
judeheyjude@hotmail.com

Vitriolic Whispers: A Curtain of Shame



A Political Statement

Cleve Overton

The Installation

This installation is a statement about free speech. It is a visual and auditory creation in support of the right of media stars, like Rush Limbaugh, to speak their minds, and of the rest of us to say the opposite and express criticism of their views. The piece was inspired by a collection of tapes, largely of Rush Limbaugh and other radio talk show hosts. They were recorded over a period of two decades by a little old lady in Staten Island, New York, who thought Rush made a good case and enjoyed his rants. She recorded the broadcasts daily, storing thousands of tapes in her basement. She has gone to her reward, but her tapes have found new life in this work of art.

The Artwork

The curtain consists of ten woven panels of audiotape, 10-feet high by 4 feet wide. They rustle and whisper with the slightest wind, without revealing the hateful statements stored on them. They are various shades of gold, brown, and black, depending on the manufacturer of the tapes. Below the curtains, the centerpiece of the exhibit is a large box made from the transparent tape containers, filled with used tapes and holding a large mouth in the middle. The voice of Rush Limbaugh, double-dubbed so that you can recognize his voice but not discern his message, emanates from below.



The Artist

Cleve Overton, born in NYC, where he was an adjunct professor at City University of New York, lives in Washington, DC. He has been exhibiting nationally and internationally for decades. His work is in private collections in Europe, Africa, and Asia.

